

Open Forum
Fall 2020
Immigration
Update for
Students

Tufts International Center
July 22, 2020



Before We Begin

- Please mute your audio
- Chat room will be disabled until we start the Q&A period
- Refer to <https://icenter.tufts.edu/immigration/covid-19> for ongoing updates

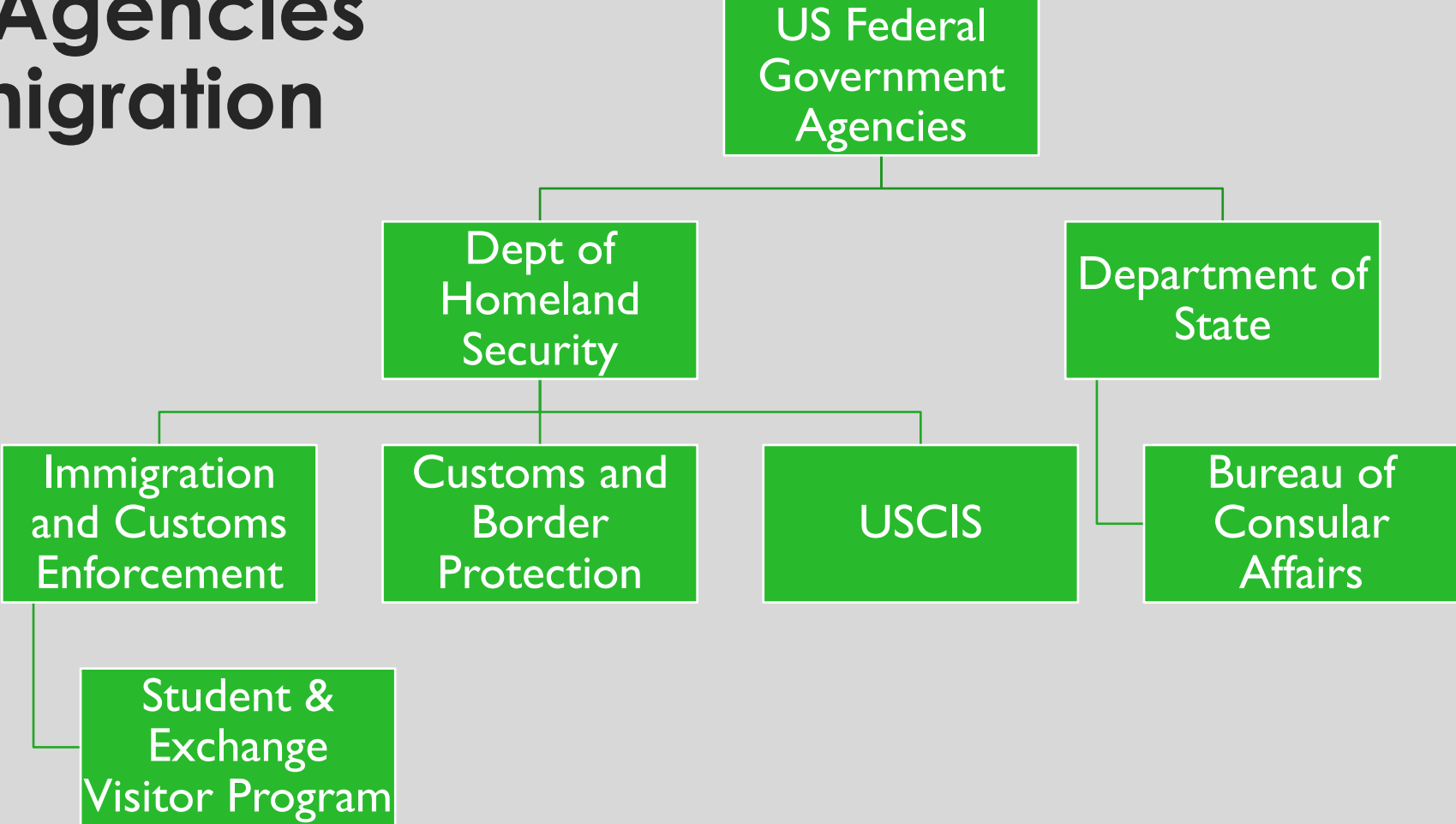
Today's Topics

- Visa and Developments
 - Enrollment Requirements
 - Pre-submitted FAQs on Insurance and Housing and More
 - More
-
- Next Forum: Wednesday, August 5 at 10am – go to announcement at icenter.tufts.edu

Visa Processing and Travel Developments

- US State Department announced on July 15 that US consulates would begin limited re-openings, depending on local conditions
- Reports that many US consulates have started to open up visa appointments for July / August, especially in western Europe and other countries in Asia
- Start the DS-160 visa application so that you can make an appointment when appointments open up in your area

Federal Agencies and Immigration



Schengen Area / UK & Ireland

- US State Department announced on July 16 that students could now apply for F-1 visas and/or travel to the US with valid F-1 visas even though the COVID-19 travel suspension remains in place
- **EXERCISE CAUTION** especially for travel to US in the next 2-3 weeks
 - State Department announcement has not yet been confirmed by US Customs and Border Protection, which oversees arrival at US airports and border crossings
 - Remember that if you are transiting through the Schengen area / UK and Ireland from a region that is under a COVID-19 travel suspension, you may still be ineligible to enter the US

I-20 Reprints

- July 6 announcement by ICE said schools would need to reprint I-20s for persons applying for F-1 visas and/or coming to the US this fall
- July 6 announcement was withdrawn by Department of Homeland Security, so I-20 reprint requirement has been removed
- **HOWEVER**
 - Some US consulates are still requiring reprinted I-20s!
 - We are actively working with US State Department to tell them what the Department of Homeland Security did

Other COVID-19 Travel Suspensions

- Besides developments concerning travel from the Schengen area and UK/Ireland, COVID-19 travel suspensions are still in effect for persons trying to come to the US from China, Iran, and Brazil
 - Entry to US not permitted if you were in these countries or regions within the 14 day period prior to attempting entry into the US
 - Includes transit stops
- Non-essential (tourism) travel to US from Canada and Mexico still restricted through August 20
 - Student travel OK

Enrollment Requirements

- Expected Fall 2020 rules coming out soon
- Current rules are discussed on our COVID-19 FAQ page
 - <https://icenter.tufts.edu/immigration/covid-19>
- Generally:
 - New students can come to the US only if programs are offering in-person classes (including hybrid classes)
 - Continuing students can maintain status with full-time enrollment (regardless of modality)
- Look for updates in near future

Student Health Insurance

- If you are taking classes, even remotely, for Fall 2020 you will be charged health insurance
- You may apply for a waiver if you will not be in the US and will rely on your home country insurance instead – deadline is July 31st
- Go to <https://icenter.tufts.edu/immigration/covid-19> --> look for FAQs on campus services, or contact studenthealthinsurance@tufts.edu
- If you waive the insurance requirement, the waiver is for the entire year (September 1 2020 - August 31 2021)
- You can enroll in the student health insurance plan if you come to the US at a later point during the year

Pre-Submitted Questions

1. Can I change what I indicated on my July 7 or July 10 intent form (in both directions – from “coming” to “online” or “online” to “coming”)?
2. What will be the quarantine requirements if I am coming to Tufts from another US state? Another country?
3. Will COVID-19 testing be done at arrival, and how frequently thereafter? Will insurance pay for these tests?
4. When can I move in to my on-campus housing assignment, and how many people can come with me when I move in?
5. What is the deadline for getting a full refund of housing charges if I am not able to come to campus after all? Conversely, how long can I “hold” onto my housing assignment, if I think I’m going to be a little late in coming to campus?

Resources on COVID-19 and Campus Reopening

- <https://coronavirus.tufts.edu>
- covid19@tufts.edu

Q&A and Thank You

- Next Forum: Wednesday, August 5 at 10am EDT
 - Sign up by going to <https://icenter.tufts.edu>
- Updated FAQs on web site happening every Monday
 - <https://icenter.tufts.edu/immigration/covid-19>
- Send questions to internationalcenter@tufts.edu
- Thank you for coming!